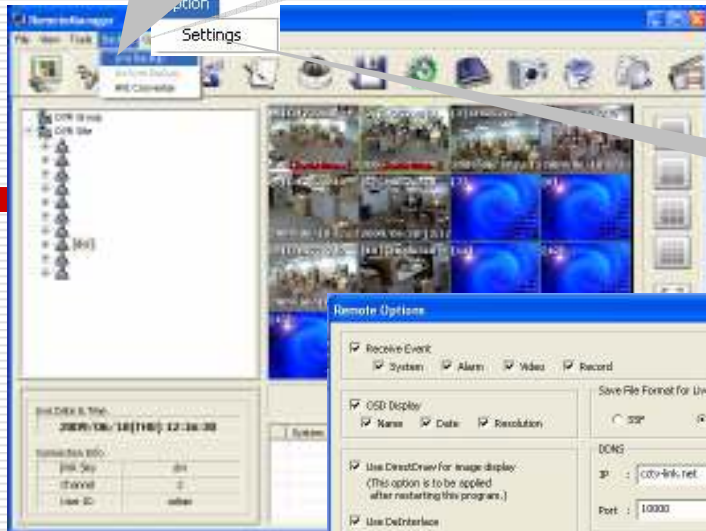


REMOTE MANAGER LIVE BACKUP

Live back-up is used when your connected to the dvr using remote manager and you want to back up the video locally to the PC.

1. ONCE CONNECTIONS IS ESTABLISHED. Select camera by pressing left click, camera box turns yellow. To stop recording press live backup again

2. To stop recording press live backup again



3. To Locate file save path. Click OPTION, click settings

4. Click on button to view save path

5. Click folder to set save location, then click ok



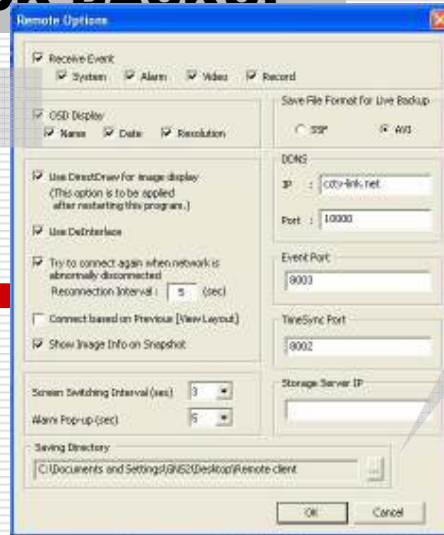
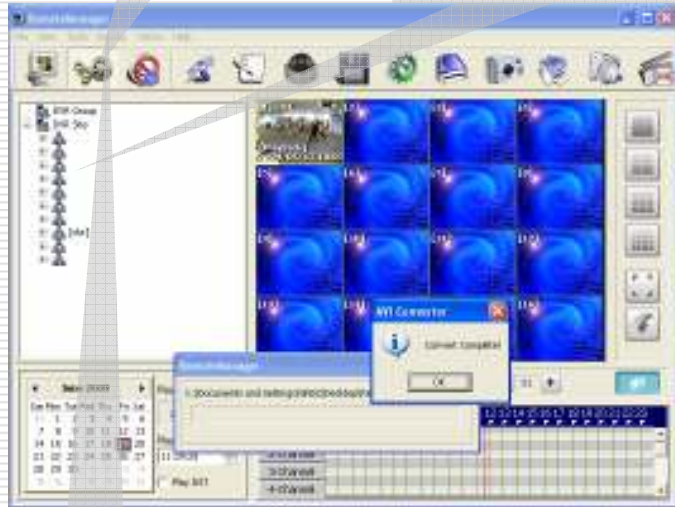
6. The backup file where be saved in the saving directory location

7. FILE SAVE LOCATION DOUBLECLICK ON FILE TO PLAY

REMOTE MANAGER PLAYBACK BACKUP

1. PRESS VIDEO MODE

2. CLICK N DRAG SITE NAME TO CHANNEL 1 ON DISPLAY



4. Click on button to view save path

4. Click folder to set save location, then click ok



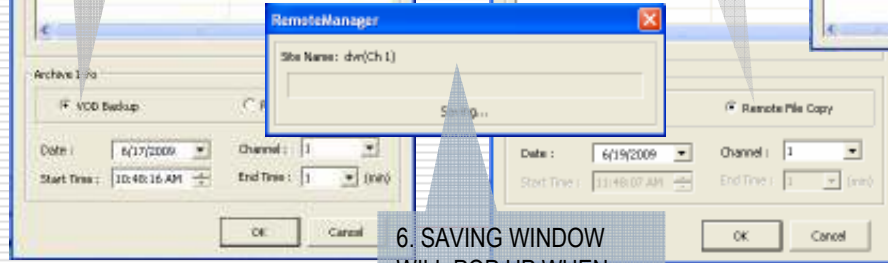
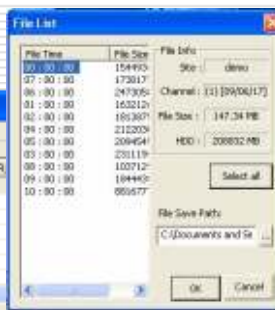
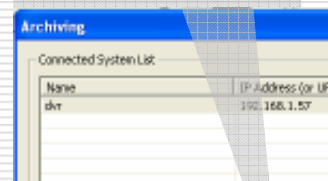
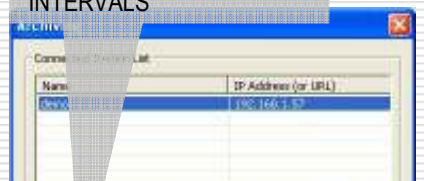
7. AFTER LOCATING FILE SAVE LOCATIONS CLICK AND DRAG TO CHANNEL 1 ON REMOTE MANAGER'S PLAYBACK MODE TO CONVERT TO AVI

8. CLICK AVI BUTTON TO CONVERT INTO AVI FORMAT

3. PRESS BACKUP

5. VOD BACKUP IS TO BACK UP IN TIME INTERVALS

5. REMOTE FILE COPY IS USED FOR BACKING UP HOUR INTERVALS



6. SAVING WINDOW WILL POP UP WHEN THE VIDEO IS BEING BACKUPED

AFTER YOU CONVERT THE FILE INTO AVI. THE FILE WILL APPEAR AT THE FILE SAVE PATH AS A AVI FILE

