

NF-DVR Series

NF-412 / NF-824 / NF-1624



SPECIFICATION			
Model	NF-412	NF-824	NF-1624
Operating System	LINUX		
Pentaplex Function	Simultaneous Live/Record/Playback/Archive/Network		
Video Compression	H.264 Codec(DSP Based)		
Live Display Speed	120/100fps	240/200fps	480/400 fps
Recording Speed	120/100fps	240/200fps	240/200 fps
Video Input	4CH(BNC)	8CH(BNC)	16CH(BNC)
Loop out	4CH(BNC)	8CH(BNC)	16CH(BNC)
Video Output	VGA monitor	1 SXGA (1280 X1024)	
	Sub monitor	1 Composite(BNC) / 1 SVHS	
Screen Division	Spot-out	1 Analog(BNC)	1 Analog(BNC)
	Live	1,4	1,4,6,9
Audio In/Out	Playback	1,4	1,4,9
		4 Line in(RCA)/ 1 Line out(RCA), CODEC:G.711	
Alarm In/Out	4 In/ 1 Out(Relay)	8 In/ 8 Out	16 In/ 16 Out
Storage Archive	2 HDD's + 1 ODD	Up to 4 HDD's(SATA) + 1 ODD, Support External Storage(Optional) USB Device, CD/DVD-RW & Network	
USB Port	2 Front	3(Front 2, Rear 1)	
PTZ & Keyboard control	RS-485		
System Control	USB Mouse, Front button, Remote controller & Keyboard controller		
Network	LAN, DHCP, Dynamic IP, DDNS,		
Power	Adapter, 12V/5A	SMPS, MAX.200W, 100~220VAC, 50~60Hz	
Operating Temperature	0 ~ 40		
Humidity	10 ~ 90% NC		
RemoteSW	CMS/RA support, Web Browser, PDA Viewer, Smart Phone		

MAIN FEATURES	
LIVE DISPLAY	
OSD	On/Off
Border Color	Selectable
Digital Zoom	up to 4X
SEARCH	
Calendar Search	Search by time
Event Search	Search by event
Panorama Search	Frame by Frame / Multi-hour
PLAYBACK	
Playback Speed	Variable Playback(Max.64x)
Instant playback	Instant playback mode for quick review
Audio Play	Synchronized with Video
SYSTEM	
Video Covert	Video will be hidden Live & Playback mode, But it will be recorded
PTZ	Supported most of PTZ protocol, Preset up to 255
Motion Area Setting	Adjustable GRID(20X12), 10 Steps Sensitivity Level
Time Synchronization	Auto Time Sync. By NTP server
User Authority	Each User Group has different function
System Reliability	Watch-Dog, Auto-Recovery after power Failure
Firmware Upgrade	Via USB device and Network
Configuration Export & Import	Setting configuration copy & paste to other DVR via USB
S.M.A.R.T. Alarm	Auto-Detect & monitoring the HDD's problem

Key Features

- Available in 4, 8, 16 Channel Models
- Pentaplex Operation - Recording / Playback / Network / Backup / Live
- H.264 Video Compression
- USB and DVD-RW Backup
- Recording Speed: 240 FPS Maximum
- All Channel Loop-through Video Output
- VGA, BNC Analog, S-Video Output
- Video Resolution / 352x240, 704x240, 704x480
- Multi Channel Playback (up to 16 Channels)
- Fast forward and rewind playback (1x - 64x)
- Spot Output
- 4 Ch Audio and Alarm Inputs / Outputs (All Model)
- Maximum of 2 HDD (NF-412)
- Maximum of 4 HDD (NF-824/NF-1624)
- RS-485 Interface for PTZ Control

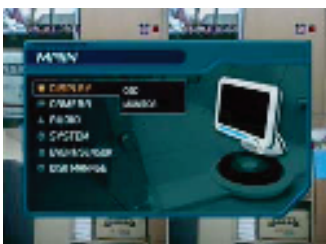


Network Features

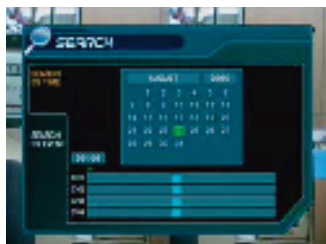
- Network by Dynamic IP(DHCP) DDNS / Static IP
- Multi-site Client Software or Web via Internet Explorer
- Remote Access and Total Management from Client PC
- Network Bandwidth Limit Configuration
- Covert Channel Management or Setting By Remote Administrator
- Event Log Information via Remote Network Software
- Copy as Jpeg, BMP, AVI file backup
- Configure Multi password Protection
- Fast forward and rewind, Playback and Frame Search
- Multi User access to DVR system
- Alarm Popup and Remote Client

GUI & Client Software Images

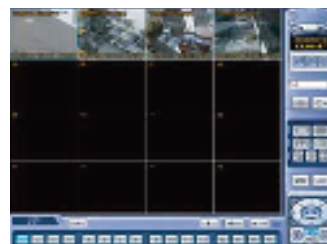
• GUI (Main)



• GUI (Search)



• Remote Client (Live)



• Remote Client (Search)

